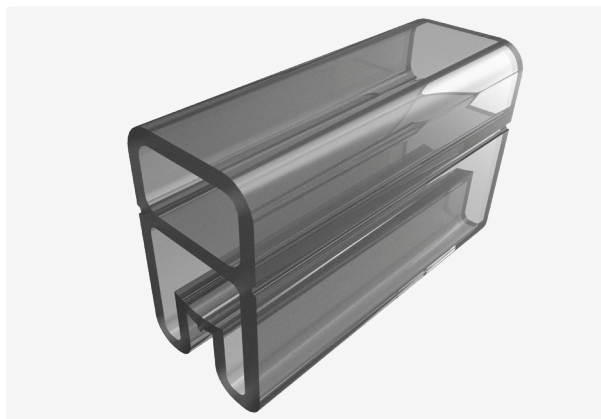




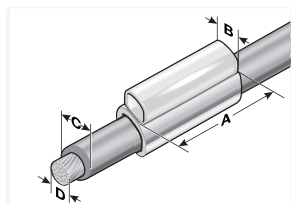
KTH label sleeve (halogen-free)



Product information

High-quality, fully transparent, halogen-free label sleeves for labelling wires, cables and conduits. KTH label sleeves hold the type KS labels.

- Wire cross section from 0.22 – 35 mm²
- Available in various lengths



Information, conformities and approvals



Article	Order No.	Area of application from - to Ø mm (C)	Wire cross section* from - to mm ² (D)	Recommended Label	PU pcs.
12 mm sleeve length (A), single line marking					
KTH 0/12	86221210	1.3 - 2	0.5	KS 4/12 x	2000
KTH 1/12	86221212	1.8 - 2.3	0.5	KS 4/12 x	2000
KTH 2/12	86221214	2.5 - 3.3	0.75 - 2.5	KS 4/12 x	2000
KTH 3/12	86221216	3.5 - 6	2.5 - 6	KS 4/12 x	1000
KTH 4/12	86221218	6 - 9	10 - 16	KS 4/12 x	1000
18 mm sleeve length (A), single line marking					
KTH 0/18	86221810	1.3 - 2	0.5	KS 4/18 x	2000
KTH 1/18	86221812	1.8 - 2.3	0.5	KS 4/18 x	2000
KTH 2/18	86221814	2.5 - 3.3	0.75 - 2.5	KS 4/18 x	2000
KTH 3/18	86221816	3.5 - 6	2.5 - 6	KS 4/18 x	1000



KTH label sleeve (halogen-free)

Article	Order No.	Area of application from - to Ø mm (C)	Wire cross section* from - to mm ² (D)	Recommended Label	PU pcs.
KTH 4/18	86221818	6 - 9	10 - 16	KS 4/18 x	1000
KTH 5/18	86221820	9 - 14	25 - 35	KS 4/18 x	500
23 mm sleeve length (A), single line marking					
KTH 0/23	86222310	1.3 - 2	0.5	KS 4/23 x	1000
KTH 1/23	86222312	1.8 - 2.3	0.5	KS 4/23 x	2000
KTH 2/23	86222314	2.5 - 3.3	0.75 - 2.5	KS 4/23 x	1000
KTH 3/23	86222316	3.5 - 6	2.5 - 6	KS 4/23 x	1000
KTH 4/23	86222318	6 - 9	10 - 16	KS 4/23 x	1000
30 mm sleeve length (A), single line marking					
KTH 3/30	86222416	3.5 - 6	2.5 - 6	KS 4/30 x	1000
KTH 4/30	86222418	6 - 9	10 - 16	KS 4/30 x	500

Material properties



EVA

Thermal properties



Temperature / temperature range -40 °C – 60 °C
short term short term: 65 °C

Fire properties



Fire classification HB

Technical information



Halogen-free



KTH label sleeve (halogen-free)

General technical data

Halogen-free

Assembly method



Sleeve system