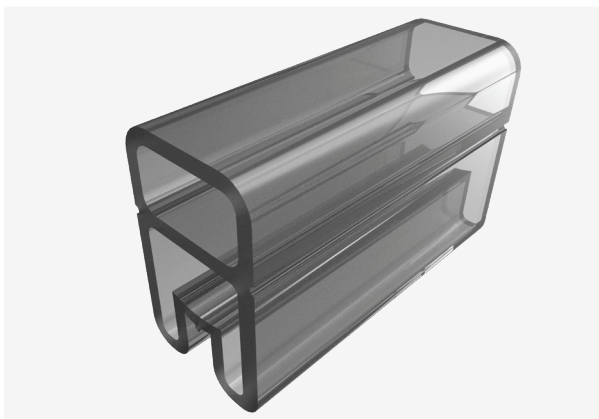




## KT label sleeve (standard sleeve)

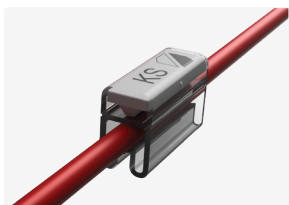
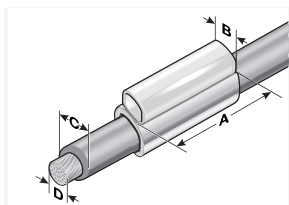


### Product information

High-quality, fully transparent label sleeves for labelling wires, cables and conduits. The KT label sleeves hold type KS labels.

- Available in 7 size options
- Application range from 0.22 - 120 mm<sup>2</sup>
- Available in various lengths

The KT 2/20x9 as well as KT 2/35x9 for multi-line marking are designed to hold type KSO labels.



### Information, conformities and approvals



Article	Order No.	Area of application from - to Ø mm (C)	Wire cross section* from - to mm <sup>2</sup> (D)	Recommended Label	PU pcs.
<b>10 mm sleeve length (A), single line marking</b>					
KT 0/10	86201010	1.3 - 2	0.22 - 0.5	KS 4/10 x	2000
KT 1/10	86201012	1.8 - 2.5	0.5 - 1	KS 4/10 x	2000
KT 2/10	86201014	2.5 - 4	0.75 - 2.5	KS 4/10 x	2000
KT 3/10	86201016	4 - 6.5	2.5 - 6	KS 4/10 x	1000
KT 4/10	86201018	6 - 10	10 - 25	KS 4/10 x	1000
KT 5/10	86201020	9 - 15	25 - 50	KS 4/10 x	1000
KT 6/10	86201022	15 - 23	50 - 120	KS 4/10 x	500
<b>12 mm sleeve length (A), single line marking</b>					
KT 0/12	86201210	1.3 - 2	0.22 - 0.5	KS 4/12 x	2000
KT 1/12	86201212	1.8 - 2.5	0.5 - 1	KS 4/12 x	2000



## KT label sleeve (standard sleeve)

Article	Order No.	Area of applica- tion from - to Ø mm (C)	Wire cross section* from - to mm <sup>2</sup> (D)	Recommended Label	PU pcs.
KT 2/12	86201214	2.5 - 4	0.75 - 2.5	KS 4/12 x	2000
KT 3/12	86201216	4 - 6.5	2.5 - 6	KS 4/12 x	1000
KT 4/12	86201218	6 - 10	10 - 25	KS 4/12 x	1000
KT 5/12	86201220	9 - 15	25 - 50	KS 4/12 x	1000
KT 6/12	86201222	15 - 23	50 - 120	KS 4/12 x	500
<b>15 mm sleeve length (A), single line marking</b>					
KT 0/15	86201510	1.3 - 2	0.22 - 0.5	KS 4/15 x	2000
KT 1/15	86201512	1.8 - 2.5	0.5 - 1	KS 4/15 x	2000
KT 2/15	86201514	2.5 - 4	0.75 - 2.5	KS 4/15 x	2000
KT 3/15	86201516	4 - 6.5	2.5 - 6	KS 4/15 x	1000
KT 4/15	86201518	6 - 10	10 - 25	KS 4/15 x	1000
KT 5/15	86201520	9 - 15	25 - 50	KS 4/15 x	1000
KT 6/15	86201522	15 - 23	50 - 120	KS 4/15 x	500
<b>18 mm sleeve length (A), single line marking</b>					
KT 0/18	86201810	1.3 - 2	0.22 - 0.5	KS 4/18 x	2000
KT 1/18	86201812	1.8 - 2.5	0.5 - 1	KS 4/18 x	2000
KT 2/18	86201814	2.5 - 4	0.75 - 2.5	KS 4/18 x	2000
KT 3/18	86201816	4 - 6.5	2.5 - 6	KS 4/18 x	1000
KT 4/18	86201818	6 - 10	10 - 25	KS 4/18 x	1000
KT 5/18	86201820	9 - 15	25 - 50	KS 4/18 x	750
KT 6/18	86201822	15 - 23	50 - 120	KS 4/18 x	300
<b>23 mm sleeve length (A), single line marking</b>					



## KT label sleeve (standard sleeve)

Article	Order No.	Area of application from - to Ø mm (C)	Wire cross section* from - to mm <sup>2</sup> (D)	Recommended Label	PU pcs.
KT 0/23	86202310	1.3 - 2	0.22 - 0.5	KS 4/23 x	2000
KT 1/23	86202312	1.8 - 2.5	0.5 - 1	KS 4/23 x	2000
KT 2/23	86202314	2.5 - 4	0.75 - 2.5	KS 4/23 x	1000
KT 3/23	86202316	4 - 6.5	2.5 - 6	KS 4/23 x	1000
KT 4/23	86202318	6 - 10	10 - 25	KS 4/23 x	1000
KT 5/23	86202320	9 - 15	25 - 50	KS 4/23 x	500
KT 6/23	86202322	15 - 23	50 - 120	KS 4/23 x	250
<b>30 mm sleeve length (A), single line marking</b>					
KT 0/30	86203010	1.3 - 2	0.22 - 0.5	KS 4/30 x	1000
KT 1/30	86203012	1.8 - 2.5	0.5 - 1	KS 4/30 x	1500
KT 2/30	86203014	2.5 - 4	0.75 - 2.5	KS 4/30 x	1000
KT 3/30	86203016	4 - 6.5	2.5 - 6	KS 4/30 x	1000
KT 4/30	86203018	6 - 10	10 - 25	KS 4/30 x	500
KT 5/30	86203020	9 - 15	25 - 50	KS 4/30 x	500
KT 6/30	86203022	15 - 23	50 - 120	KS 4/30 x	200
<b>20 mm sleeve length (A), single and multi-line marking</b>					
KT 2/20x9	86202050	2.5 - 4	0.75 - 2.5	KSO 20x9	1000
<b>35 mm sleeve length (A), single and multi-line marking</b>					
KT 2/35x9	86203550	2.5 - 4	0.75 - 2.5	KSO 35x9	500
<b>70 mm sleeve length (A), single line marking</b>					
KT 2/70	86207014	2.5 - 4	0.75 - 2.5	KS 4/30-70	500
KT 3/70	86207016	4 - 6.5	2.5 - 6	KS 4/30-70	400



## KT label sleeve (standard sleeve)

---

### Material properties



Polyvinyl chloride (PVC) |

---

### Thermal properties



Temperature / temperature range -40 °C – 60 °C

---

### Fire properties



Fire classification V0

---

### Assembly method



Sleeve system

---